

Training in tijden van crisis?

In tijden waar de budgetten onder enorme druk staan, heeft elke euro die uitgegeven wordt een belangrijke impact op het resultaat. Vaak worden daarom opleidingsbudgetten drastisch beperkt. Hierbij wordt wel eens vergeten dat geld en tijd voor opleiding een investering is in de medewerker die het resultaat van het bedrijf ten goede komt.

- Door het volgen van de juiste opleiding, kan men zijn job beter en efficiënter uitvoeren, wat de performantie van het bedrijf verbetert.
- Het volgen van opleiding helpt stress te voorkomen omdat men de zaken onder controle houdt.
- Opleiden heeft een motiverend effect wat leidt tot een grotere jobvoldoening; dit verkleint het risico dat goede medewerkers het bedrijf verlaten - medewerkers die u morgen zeker terug hard zal nodig hebben.

Waarom opleidingen bij ABIS volgen?

Uiteraard volgt men vandaag in de eerste plaats die opleidingen die het grootste en het snelst effect opleveren. Eens die prioriteiten bepaald, is het belangrijk de juiste opleidingspartner te kiezen. Ik kan tientallen redenen opsommen waarom u ook ABIS bij uw keuze in overweging moet nemen; ik geef er hier slechts enkele:

- Opleidingen volgen bij ABIS betekent dat u geen risico neemt; niet voor niets is ABIS reeds meer dan 25 jaar succesvol op de opleidingsmarkt en mag het zich verheugen in een trouwe klantenkring.
- Opleidingen bij ABIS geven steeds prioriteit aan de praktische bruikbaarheid: wat u leert zal u ook nodig hebben in uw bedrijf.
- Opleidingen bij ABIS zijn compact: de tijdsinvestering is tot een minimum beperkt.
- Bij ABIS vindt u niet enkel opleidingen van uitstekende kwaliteit, ook de dienstverlening errond wordt door onze klanten enorm geapprecieerd: advies m.b.t. de te volgen cursussen, opvolging van de cursisten, nazorg, perfecte administratie, ...

Ik hoop u hiermee overtuigd te hebben dat opleiden ook vandaag een must is en dat ABIS een valabele trainingpartner is voor al uw opleidingsbehoeften.

Met de bijgevoegde folders wil ik een aantal **nieuwe initiatieven** in ons aanbod onder uw aandacht brengen. Het zijn alle opleidingen waar we beroep doen op partners die onze principes en kwaliteitsnormen onderschrijven. Hopelijk kunnen ook deze nieuwe cursussen bijdragen tot het succes van uw bedrijf.

Met vriendelijke groet,
Paul Veugelen

Texte français au verso

Formation en temps de crise?

Dans des périodes où les budgets sont strictement limités, chaque euro dépensé pèse sur le résultat. Il s'ensuit que souvent les budgets formation en pâtissent. En même temps on ne peut pas oublier que le temps et les moyens consacrés à la formation constituent un investissement qui résulte en un retour positif pour l'entreprise.

- Une formation appropriée permet au collaborateur de mieux effectuer son travail, et de manière plus efficace, ce qui est bien sûr profitable pour l'entreprise.
- Le fait de suivre une formation aide aussi à gérer (ou même éviter) le stress, puisque le collaborateur maîtrise mieux son travail.
- Et n'oublions pas l'effet motivateur qui accompagne le droit de pouvoir s'inscrire pour des formations et qui minimise le risque que de bons collaborateurs quittent l'entreprise.

Pourquoi suivre des formations chez ABIS?

Le premier choix qui s'impose est évidemment celui des formations qui vont retourner le plus grand résultat dans le plus bref délai possible.

Ensuite il s'agit d'opter pour le partenaire de formation le plus approprié. Parmi la panoplie d'arguments en faveur de ABIS, je vous en mentionne quelques-uns:

- Vous optez pour une valeur sûre: ABIS a acquis une expérience de plus de 25 ans en la matière, ce qui explique l'excellente qualité des formations.
- Suivre des formations ABIS permet d'immédiatement utiliser les connaissances acquises au sein de l'entreprise, car ABIS accorde la priorité à l'utilité pratique.
- Les formations ABIS sont compactes, ce qui revient à une réduction maximale du temps investi.
- En plus des formations, ABIS est appréciée pour ses services: les conseils concernant les cours à suivre, le suivi des apprenants pendant et après les cours, la qualité de l'administration...

J'espère avoir pu vous convaincre du fait que la formation est, même aujourd'hui, incontournable et que ABIS est un partenaire indiqué pour tous vos besoins en la matière.

La documentation qui accompagne vous permet de découvrir quelques **nouvelles initiatives** au sein de notre offre. Il s'agit de formations où nous faisons appel à des partenaires qui souscrivent à nos principes et à nos normes de qualité. Espérons que ces nouveaux cours peuvent, à leur tour, contribuer au succès de votre entreprise.

Mes meilleures salutations,
Paul Veugelen

Nederlandse tekst op keerzijde

PRACTICAL INFORMATION

Training method

The course approach is typically a combination of project experiences and best practices, based on solid theoretical background knowledge. The courses combine an interesting set of techniques with a number of exercises in order to illustrate the added value of the subject.

Course leader

AE (previously known as Application Engineers) is a Belgian consultancy company, recognised by its customers as the local leader and trusted partner in aligning Business & ICT, by delivering mission critical business solutions, grounded in a solid but flexible architecture.

Schedule and course fees

Business architecture	Leuven	1425 EUR	21-23/09/2009	English
Business process modelling	Leuven	475 EUR	16/10/2009	English
Business Process Management	Leuven	950 EUR	26-27/11/2009	English

Reductions

Reductions apply for simultaneous registrations on the same course:

- 3rd and 4th participant: 10%
- 5th and 6th participant: 15%.

Registration

To register, you can use the on-line registration form on our website or you can send an e-mail to ABIS clearly indicating on what course you want to register. A booking confirmation will then be sent to you with practical information.

Cancellation policy

Due to special circumstances or low numbers (less than 4) ABIS may cancel or reschedule any confirmed course by notifying the customer at least 5 working days before the course starts.

The customer may cancel or change an enrolment up to 10 clear working days before the start date. If the customer cancels or reschedules an enrolment less than 10 clear working days before its scheduled start date or fails to attend, the customer will be charged the full course fee.

Contact info

ABIS Training & Consulting

Diestsevest 32, BE-3000 Leuven

E-mail: training@abis.be • Website: <http://www.abis.be>

Tel. 016/245610 • Fax 016/245639

Business Architecture & Business Processes

Know to grow

abis
TRAINING & CONSULTING

Three new courses on Business architecture, Business process modelling and Business Process Management; by senior consultants of AE, a recognised specialist on the Belgian market.

This is a unique opportunity to get hold of the **knowledge, practical experience, and best practices** of AE in a **limited time frame**.

Their approach combines a way of:

THINKING (Frame of thought) - **WORKING** (Method) - **WRITING** (Tool)

Business architecture

This course is an advanced excursion on the translation of your business strategy towards your organization (on enterprise or project level) to facilitate communication, decision making, governance, company alignment, scoping and change management.

- Helps to gain insight in the fundamental structures and mechanisms of an organization, in terms of: Products, Services, Business processes, Vision, mission, strategy, Information concepts, Organizational structures, and Principles
- Allows you to define clear boundaries and priorities towards business operations and/or software delivery projects
- Can be applied on project level or - ideally - on the organization as a whole.

This training aims at people who are in touch with aligning organizations with their strategy. Ex: business managers, process owners, business analysts, business architects, process managers and project leaders.

Business process modelling

This is a hands-on course in business process modelling techniques as a basis for: Business Process Management (BPM) and software automation requirements.

- You learn how to identify and define business processes in your organization
- You learn how to model business processes yourself
- You get to know the basics of 'Business Process Reengineering' & 'Redesign'
- You learn to use business processes as a start for Business Process Management (improvement) and requirements analysis

This practical training is meant for people who need basic modelling skills to use in their day-to-day job. Ex: business & ICT analysts, process owners, business & ICT architects, and process managers.

Business Process Management

This is an advanced course on the continuous alignment of effective and efficient business processes with the strategic objectives of your organization.

- You will understand what Business Process Management is and how it may be useful in your organization
- You will know how to setup and manage the BPM context/methodology to apply BPM in your organization
- You will learn how to bring BPM into practice, and to continuously improve your processes, including change management principles
- You will learn to setup tooling, methodology and resources for BPM
- You will get to know the most common BPM techniques in today's market

This course is designed for professionals, involved in a process management or process improvement context. Ex: business managers, process owners, business analysts, business architects, process managers, and project leaders. Awareness of business processes and a touch of modelling skills is required (see the Business process modelling training).

Business architecture

Introduction

- What is business architecture?
 - . Positioning regarding enterprise architecture
 - . Business-ICT alignment frameworks and definitions
- Why do we need business architecture?
An overview of concrete business scenarios on project / enterprise level where business architecture shows its added value.
- A number of basic principles

Overview of the different interrelated elements of business architecture; including an accompanying case:

- **Business context architecture** consists of a set of interrelated building blocks that describe and model the internal and external business context (strategy, objectives, principles, etc.) of the organization (= value definition).
- **Product / service architecture** consists of a set of interrelated building blocks that describe and model the value proposition of the organization.
- **Business process architecture** consist of a set of interrelated building blocks that describe and model the business processes in different abstraction levels (= value delivery).
- **Organization architecture** consists of a set of interrelated building blocks that describe and model the organizational structures and competencies (= value delivery).
- **Business information architecture** consists of a set of interrelated building blocks that describe and model the business concepts and their relationships as to support communication and discussions (= value implementation).

Organizational aspects of business architecture

- Organization types
- Ambition level
- Roles, responsibilities and competencies (decision maker, business architect, business analyst, process manager, application architect)

Business Game

Duration: 3 days.

Business process modelling

Section 1

- Definition of a business process
- Aligning Business & ICT

Section 2

- Business Process Identification
- Model the process
- Model the Information context of the process

Section 3

- Business process improvement
- From business process requirements

Duration: 1 day.

Business Process Management

Introduction to BPM

- Today's business context
- Lessons from 30 years of corporate reengineering
- Business Process Management (BPM) defined

The BPM framework

- BPM management processes
- BPM core processes
- BPM supporting processes

Organizational aspects of BPM

- Towards a process oriented organization
- Business Process management office
- Business Process roles

BPM techniques

Duration: 2 days.

PRACTICAL INFORMATION

Course leaders

The Requirements management training is conducted by **Mithun Training & Consulting**. Mithun is a Dutch company, specialized in Requirements Management & Engineering, Analysis & Design Techniques, and in assisting organizations implementing sourcing strategies.

The Requirements specification course is presented by Dirk Cumps of **Kaizen Informatics**.

Schedule and course fees

Requirements game	Leuven	free	29/10/2009 (13.30 - 17.30)
Requirements management & engineering	Leuven	1450 EUR	30/09-02/10/2009
Requirements specification with Use Cases	Leuven	950 EUR	12-13/10//2009

Reductions

Reductions apply for simultaneous registrations on the same course:

- 3rd and 4th participant: 10%
- 5th and 6th participant: 15%.

Registration

To register, you can use the on-line registration form on our website or you can send an e-mail to ABIS clearly indicating on what course you want to register. A booking confirmation will then be sent to you with practical information.

Cancellation policy

Due to special circumstances or low numbers (less than 4) ABIS may cancel or reschedule any confirmed course by notifying the customer at least 5 working days before the course starts.

The customer may cancel or change an enrolment up to 10 clear working days before the start date. If the customer cancels or reschedules an enrolment less than 10 clear working days before its scheduled start date or fails to attend, the customer will be charged the full course fee.

Contact info

ABIS Training & Consulting

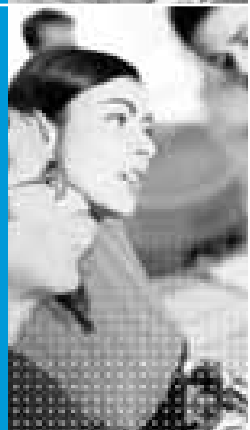
Diestsevest 32, BE-3000 Leuven

E-mail: training@abis.be • Website: <http://www.abis.be>

Tel: 016/245610 • Fax: 016/245639



Requirements engineering & specification



Know to grow

abis
TRAINING & CONSULTING



When building a system, whether it is a product, application software, device or construction work, capturing and documenting what people want is crucial to the success of that project. A project is only successful, when it is delivering what the users need, in time and within budget.

If you don't know why a solution is needed, it is impossible to know what needs to be built. If you don't know what needs to be built, it is impossible to understand the cost, time and resources to finish a project successfully. This makes requirements engineering one of the most important, perhaps even the most important, activity in a project.

Are you willing to make the gamble or do you want to make your projects successful? Find out how we can help you to make this happen!

Requirements game

Do you recognize yourself in the following situation?

- You have heard of requirements engineering, but you are not sure it is something for you.
- Your engineers fail to deliver what you thought you asked for.
- The business is not able to express what they want.
- Users are way too savvy about technology for my taste.
- They keep changing their minds, it drives me nuts.
- You want to implement a requirements engineering process, but don't know where to start.

Then this session is for you!

During this **highly interactive** workshop, we will work with you to give you an understanding of what a requirements engineer actually should do and what he can do to excel in his job. We will address the specific skill sets a requirements engineer should have.

Requirements management & engineering

This training provides some techniques for the successful elicitation of requirements.

Next to writing good requirements, the role of requirements is examined across the entire systems life cycle; from techniques for their initial capturing and defining through the separation of user requirements from system requirements to the relationship between requirements and other project data. Methods are discussed for capturing, defining, and organising each logically. The course considers the importance of requirements in the entire development process from both customer and suppliers point of view.

This course takes a tool-independent approach to understanding the key role of requirements in the context of the project development process and on how to define requirements. It uses an interactive format.

Requirements specification with Use Cases

System developers and end users have always been setting up meetings to collaborate with regard to requirements specification. One method showed up to be better than the other but there has always been a demand for a method that could prove to be the best of practice - until now: Use Cases is a description technique that takes "the users and their demands" as the starting-point for the co-operation between this users and the system people to analyse and describe requirements with Use Cases. Experience has proven that with Use Cases we finally have a method that guarantees a prolific collaboration with regard to requirement specifications between the project system development and the end users.

By the end of the course the attendees will be capable to actively participate at the functional part of requirements specification by using the Use Case technique. They will have learned in detail what the possibilities and restrictions of Use Cases are at the different Use Case levels.

The way the Use Cases are written is based on "Writing Effective Use Cases" of Alistair Cockburn.

Requirements game

Intended for

Anyone with a genuine interest in the possibilities of requirements engineering.

Main topics

- Introduction
- The Requirements Game
- Closure Game & Conclusions
- Open facilitated discussion
- What's Next?

Training method

Highly interactive practical session using a case study.

Duration: half day.

Course leader: Mithun.

Requirements management & engineering

Intended for

Project managers, software developers, system engineers, product-marketing staff, quality managers, test engineers.

Main topics

- Requirements concepts
- User & system requirements
- SMART requirements
- Categories of requirements
- Gathering requirements
- Writing requirements
- Reviewing requirements
- Establishing priorities
- Change management & traceability

The following questions are answered:

- Where do requirements come from?
- Who are the stake holders?
- How do I capture and document requirements SMART?
- How do I manage requirements?

- How do I validate requirements?

Training method

Lectures, practical exercises and guided discussions. Comprehensive interactive workshop, encouraging attendees to examine their existing methods of doing business and to investigate more effective approaches.

Duration: 3 days.

Course leader: Mithun.

Requirements specification with Use Cases

Intended for

This course is intended for project managers, project leaders, business process owners and functional analysts - all representing the supplier side - and to business owners and dedicated end users - representing the customer side.

Main topics

- Use Cases and requirements specifications
- Use Case modelling - understand the needs of customers/users
- Actors and Use Cases
- Use Case levels
- Superior Use Case descriptions
- Planning of iterations
- Normal flow description
- Find and describe variations
- Help-type Use Cases (include and extend)
- Prototyping and Use Cases
- From Use Case to Test Case

Training method

A mixture of theory and practical exercises based on an "Example Case". Most of the exercises are done in small groups.

Duration: 2 days.

Course leader: Dirk Cumps (Kaizen Informatics).

PRACTICAL INFORMATION

Training method

Instructor-led classroom training. The theory will be illustrated by cases. Especially several test design techniques will be exercised in depth.

Course leaders

The ISTQB course is given by **Tesco**. As an independent third party, Tesco checks if your software is qualitative and fit for use. They help to increase the software quality in co-operation with the software development team/supplier. Tesco is an accredited ISTQB course provider.

The TMap Next training is provided by **Sogeti**. Sogeti provides information technology services to businesses and public sector organizations. With its Testing and Business Intelligence department, Sogeti has developed expertise in structured testing using TMap.

Schedule and course fees

Structured software testing:

ISTQB Foundation level	Leuven	1200 EUR	15-17/09/2009	English
ISTQB Foundation exam	Leuven	190 EUR	17/09/2009	English
Testing with TMap Next	Leuven	1800 EUR	26-29/10/2009	?

Reductions

Reductions apply for simultaneous registrations on the same course:

- 3rd and 4th participant: 10%
- 5th and 6th participant: 15%.

Registration

To register, you can use the on-line registration form on our website or you can send an e-mail to ABIS clearly indicating on what course you want to register. A booking confirmation will then be sent to you with practical information.

Cancellation policy

Due to special circumstances or low numbers (less than 4) ABIS may cancel or reschedule any confirmed course by notifying the customer at least 5 working days before the course starts.

The customer may cancel or change an enrolment up to 10 clear working days before the start date. If the customer cancels or reschedules an enrolment less than 10 clear working days before its scheduled start date or fails to attend, the customer will be charged the full course fee.

Contact info

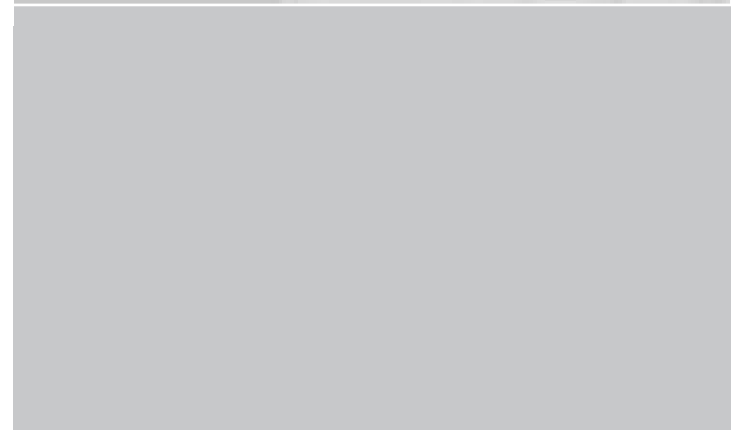
ABIS Training & Consulting

Diestsevest 32, BE-3000 Leuven

E-mail: training@abis.be • Website: <http://www.abis.be> • Tel: 016/245610 • Fax: 016/245639



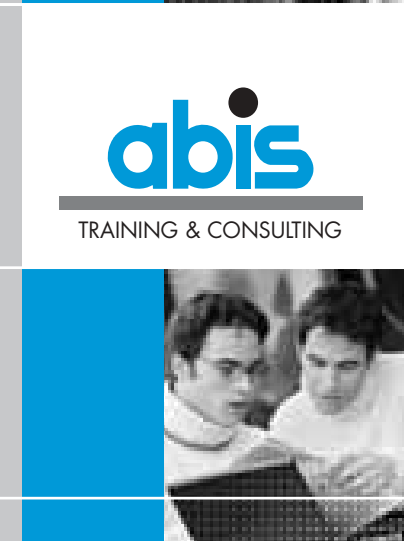
Software testing



Know to grow

abis

TRAINING & CONSULTING



Software Testing is part of the development life cycle. Testing has become indispensable when it comes to assess the quality of the software product and to help making the right management decisions.

In collaboration with recognised leaders in the software testing domain, ABIS presents two courses, each with the same objectives, but based on a different frameworks:

- **Tesco** presents a testing course based on the ISTQB qualification scheme;
- **Sogeti** presents a testing course based on the TMap Next framework.

Both courses will provide insight in the fundamentals of testing: what is testing and why should one test, the fundamental test process, what it is and how the different steps in the process map on different software development models. They will also explain the different test levels (or test phases) and test types.

Structured software testing: ISTQB Foundation level

After an overview of the fundamental test process, techniques will be presented on how to perform static and dynamic testing. These techniques are useful for both the developer and the tester.

Some objectives for test management will be presented, covering topics like organising your testing and test team, planning the test process, monitoring and controlling the progress and reporting about these. It will also give some background on risks and how to control them.

And to conclude, an overview of different test tools will be provided, with benefits and risks and a way to introduce such a tool into an organisation.

Please note that this course does not focus on a specific project (Prince2, PMP, ...), development (RUP, XP, DSDM, ...) or test (TMap, TestFrame, STBox, ...) methodology, the principles taught here can be applied to any existing methodology.

This training, which is officially called ISTQB Certified Tester Foundation Level (CTFL), is accredited by ISTQB. Tesco is able to organise the exam corresponding to this course.

Testing with TMap Next

TMap (Test Management Approach) is being used by a lot of organisation in Belgium and Holland and is one of the de-facto standards for testing. TMap is a generic approach, fit for all kinds of testing and all testing activities in IT.

The course treats the 4 essentials on which TMap is based:

- TMap is based on business driven test management
- TMap gives a complete description of the complete test process.
- TMap contains a complete tool box with techniques, check lists, test organisation structures, test environments, test tools and procedures.
- TMap is a flexible technique which can be used for all test situations in all circumstances.

The Testing with TMap Next course will give you knowledge and insight in the phasing of the test process. You will get familiar with the basic and development test techniques and be able to adapt it - apply it - to your own environment.

Structured software testing: ISTQB Foundation level

Intended for

- Everyone new to the testing business
- Experienced testers who require a theoretical background
- Developers interested in testing.
- Project leaders/managers requiring more insight in testing
- Everyone who wants to prepare for the ISTQB Foundation examination in software testing

Background

Having general system development skills is helpful.

Main topics

The course is structured the same way as the ISTQB Foundation syllabus and the ISTQB Foundation book. This way the students are able to relate the topics covered in the course to both the syllabus and the book.

- Introduction to software testing.
- Fundamental test process & psychology of testing.
- Testing identified within different software development models & maintenance testing.
- Reviews and static analysis tools.
- Black box, white box and experience based test design techniques.
- Test management: organising, estimating, planning and controlling your test process.
- Tool support: how can tools support your test process.

Optionally, the exam can be taken at the end of the third course day.

Duration: 3 days.

Course leader: Tesco (accredited ISTQB training provider).

Testing with TMap Next

Intended for

The training is intended for junior professional testers. It is meant too for users, developers and managers/controllers involved in testing information system and software products.

Background

In order to be able to follow this training, general system development skills are required.

Main topics

Framework and importance of testing

- What is testing?
- Why test?
- The role of testing

The essentials of TMap Next

- Business driven test management
- Structured test process
- Complete tool box
- Adaptive and complete method

Processes

- Master test plan
- Acceptance and system tests
- Development tests
- Supporting processes (Test organization, Test environments, Test tools & Test professionals).

Components

- Product risk analysis
- Quality characteristics
- Estimation techniques
- Defect managements
- Metrics
- Test design techniques
- Evaluation techniques
- Test roles

Duration: 4 days.

Course leader: Sogeti.